

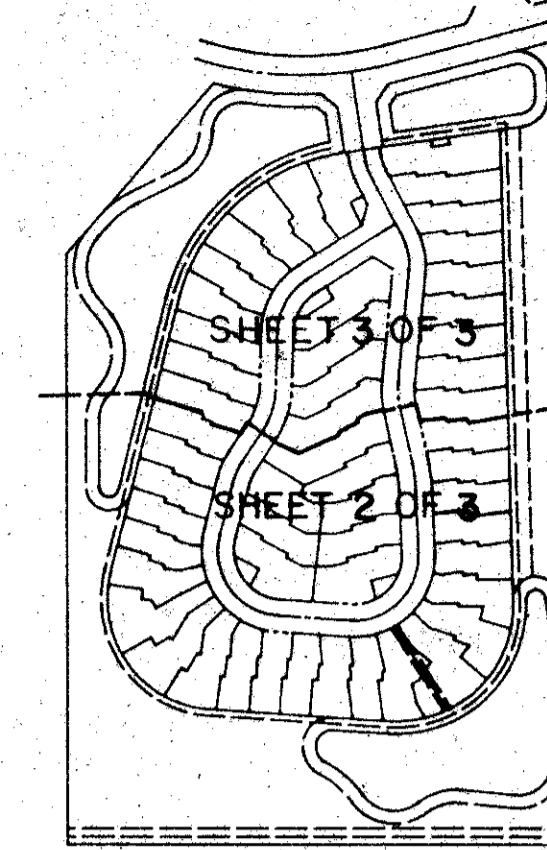
FAIRFIELD'S LACUNA PLAT 5

A PART OF BALMORAL COUNTRY CLUB P.U.D.
PALM BEACH COUNTY, FLORIDA.

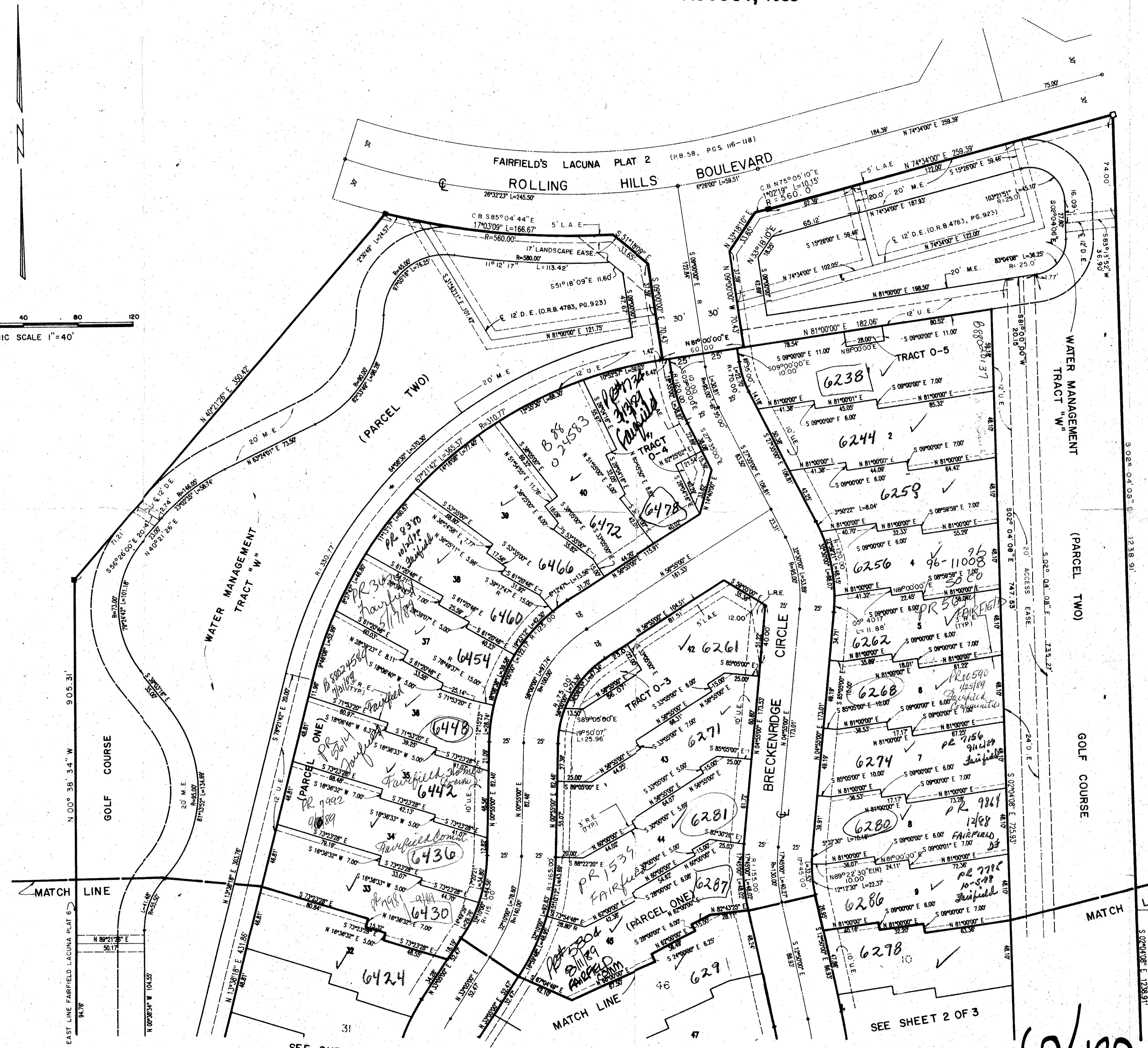
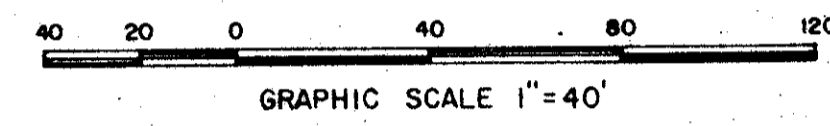
SHEET 3 OF 3

AUGUST, 1988

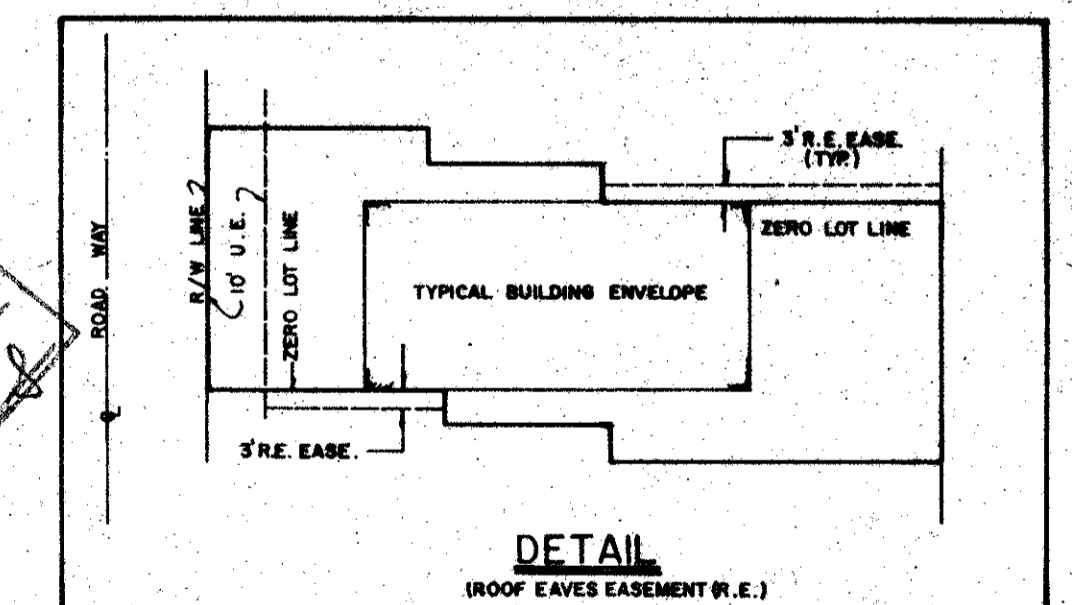
139



STATE OF FLORIDA
COUNTY OF PALM BEACH
This Plat was filed for record at _____
M. this _____ day of _____ 19____
and duly recorded in Plat Book No. _____
on Page _____
John B. Dunkle, Clerk of the Circuit Court
By _____ D.C.



BLOCK 37
PALM BEACH FARMS COMPANY PLAT NO. 3
(P.B. 2, PGS. 45-54)



- NOTES:
- (1) ALL LINES HEREON ARE NON-RADIAL UNLESS OTHERWISE NOTED (R-RADIAL)
 - (2) ALL WATER MANAGEMENT TRACTS (TRACT "W") TO BE MAINTAINED BY LACUNA HOME OWNERS ASSOCIATION INC. INCLUDING THE 20.00 FOOT MAINTENANCE EASEMENT SURROUNDING SAID WATER MANAGEMENT TRACT(S) PERIMETER.
 - (3) ROOF EAVES EASEMENT (R.E.) ADJACENT TO ZERO LOT LINES TYPICAL UNLESS OTHERWISE NOTED.

Handwritten notes:
Fairfield's Lacuna #5
Block 139
Palm Beach Farms Co. Plat #3
P.B. 2, PGS. 45-54
D.C.

TAZ-740
10/25/88

FAIRFIELD'S LACUNA PLAT 6
(P.B. 56, PGS. 142-145)

SEE SHEET 2 OF 3

SEE SHEET 2 OF 3

60/139
FAIRFIELD'S LACUNA

Landmark Surveying & Mapping Inc.
1850 FOREST HILL BOULEVARD
PH. (305) 433-5405 SUITE 100 W.P.B. FLORIDA

FAIRFIELD'S LACUNA PLAT 5